


Ivy Gardens 2
BY SAMANA DEVELOPERS

A SYMPHONY OF LUXURY

SAMANA
DEVELOPERS



URBAN HAVEN

Welcome home to Ivy Gardens 2 by SAMANA Developers - a luxurious haven. Walk into the world of opulence, reflected perfectly in every detail of this exquisite project. This is where you experience the perfect amalgamation of modern comfort and natural serenity. Discover your new sanctuary in the heart of Dubai.

ELEGANCE REDEFINED

Behold, the welcome of modern living - Joy Respire 2 by SAMANA. Development a masterpiece of architecture, this stunning project redefines luxury living in the heart of Dubai. Reflecting craftsmanship, each space here is created to be as functional as it is beautiful. Come aboard the magnificent!

SAMANA

A woman with long, wavy hair is seen from the back, wearing a strapless, floor-length green gown with a beaded bodice. The dress is billowing in the wind, creating large, graceful folds. She is standing in a field of tall grass under a soft, golden light, possibly at sunset or sunrise. The background is a blurred landscape of rolling hills.

VISION MEETS REALITY

Like a symphony, this architectural marvel orchestrates a harmonious blend of nature and luxury, offering you a serene retreat from the bustling city life. Experience the allure of sumptuousness and discover a new way of living, where comfort and style intertwine to create an exceptional living experience.





A close-up photograph of a woman with dark, wet, curly hair, looking directly at the camera. She is in a swimming pool, with water splashing around her. The lighting is soft and natural, highlighting the texture of her hair and the shimmer of the water. The overall mood is serene and elegant.

A TAPESTRY OF OPULENCE

Emerge into a realm of exquisite grandeur at Bay Gardens 2 by SAMANA Developers, where every facet of existence is concealed in lavish sophistication. This architectural marvel is a paean to luxury, meticulously crafted to cater to the most discerning tastes.



EASY ACCESS, GREAT CONVENIENCE

Situated at DLRC, IVY Gardens 2 by SAMANA Developers offers the perfect location and has everything needed for everyday life nearby, along with easy access to major locations. It is strategically located between the Emirates and Al Ain highways.

10 – 15 min

Global Village

Dubai Outlet Mall

IMG World

Fairgreen International School

15 – 20 min

Mirdif City Centre

Dubai Airport

Dubai Mall

Miracle Garden

15 – 20 min

Dubai Downtown

Burj Al Khalifa

SEAMLESS ACCESSIBILITY

With easy access to major highways and public transportation, DLRC offers residents seamless connectivity to the rest of the city. Whether you're commuting to work or exploring the city's many attractions, living in DLRC puts everything within easy reach.







REFLECTING OPULENCE

A symphony of contemporary design and timeless elegance, standing as a beacon of prestige in the bustling heart of Dubai. Each detail, a stroke of genius, weaving together to create a masterpiece simply awe-inspiring. It's time to luxuriate in the splendour!



LIVE THE SERENE MOMENTS

Immerse yourself in a world of romance and serenity at Bay Gardens 2 by SAMANA Developers. Here, amidst stunning views and gentle breezes, you'll find the perfect setting for moments of togetherness and intimacy. Our balconies are more than just outdoor spaces; they're extensions of your living spaces, offering you a private retreat where you can relax, unwind, and reconnect with your loved one.









DIVE INTO INDULGENCE

Indulge in the ultimate relaxation experience at Iru Gardens 2 by SAMANA Developers, where luxury meets tranquility. Whether you're lounging by the poolside, sipping on a refreshing drink, or taking a leisurely swim, every moment here is a testament to the art of living well. Come explore a lifestyle that is as indulgent as it is rejuvenating.



SAMANA

BLENDING TECHNOLOGY WITH LUXURY

Live a life that is as smart as it is sophisticated with our smart homes. Experience the convenience of controlling your home with just a touch or a voice command. From adjusting the lighting to setting the perfect temperature, our smart homes put you in control, allowing you to create the perfect ambience for every moment.

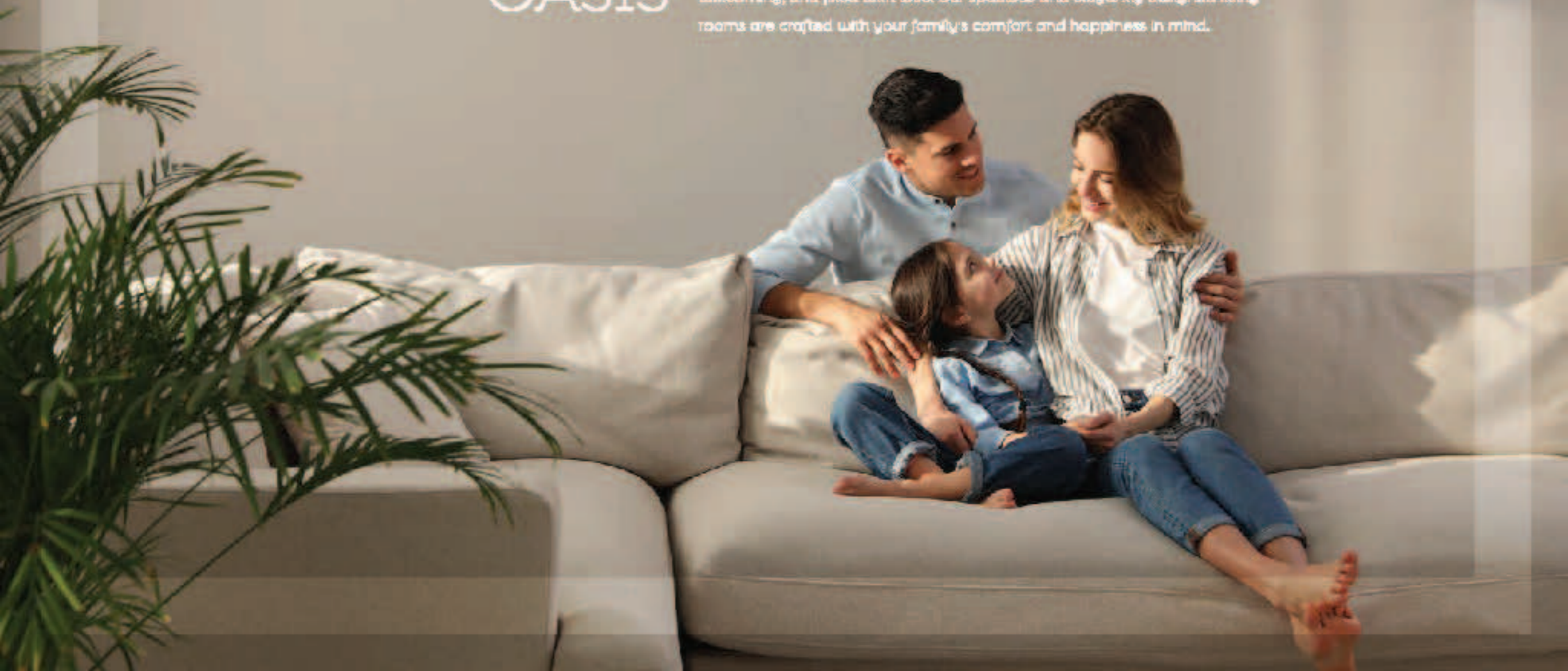






COMFORT OASIS

Experience the joy of family-centric living at Ivy Gardens 2 by SAMANA Developers, where every moment is an opportunity to create cherished memories. Here, you'll find a home that is not just luxurious but also warm, welcoming, and filled with love. Our spacious and elegantly designed living rooms are crafted with your family's comfort and happiness in mind.





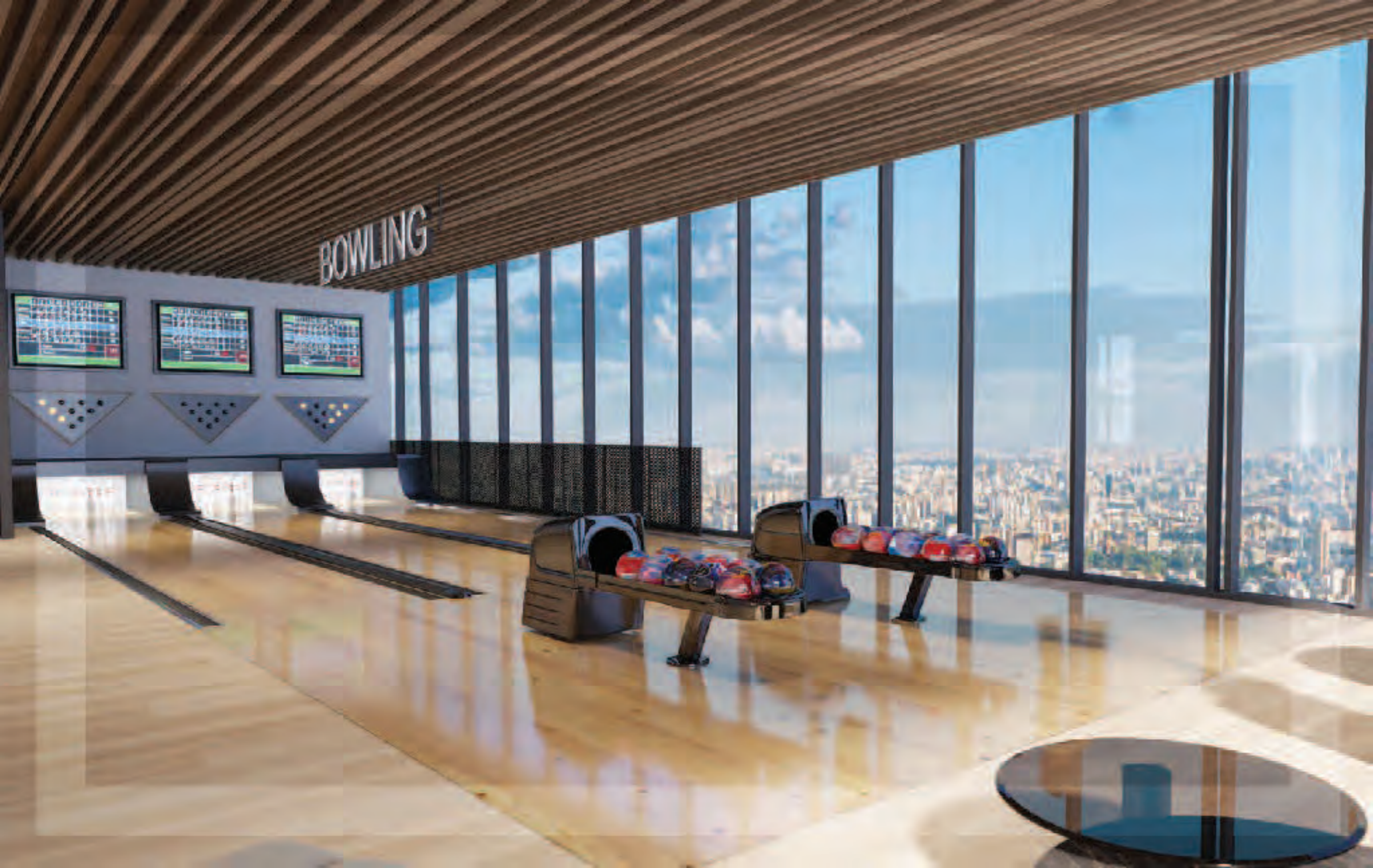




TIMELESS MOMENTS

Create unforgettable memories with your loved ones in the serene ambience of Ivy Gardens 2 by SAMANA Developers. Immerse yourself in the crystal-clear waters of our luxurious pool, surrounded by lush greenery and exquisite architecture. Experience pure joy and relaxation as you bond with family and friends in this idyllic setting, making every moment truly special.

BOWLING





A man and a woman are jogging away from the camera on a paved path through a lush garden. The scene is bathed in the warm, golden light of sunrise or sunset, with long shadows cast on the path. The garden is filled with various plants, including large palm trees and flowering shrubs. In the background, a modern building is visible through the trees.

REVEL IN THE JOYS OF LIFE

Your journey to wellness and indulgence commences at *My Gardens 2* by SAMANA Developers. Every moment is an ode to the art of living. Dive into a lifestyle that transcends the ordinary, offering you a sanctuary of serenity amidst the bustling city life. Savour the beauty of each day!





Get In Touch

We'd love to hear from you. Contact us and let's discuss all your property needs.

Uruk Properties Head Office

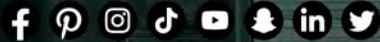
Tel: +971 4 263 0888

Mob: +971 56 400 1413

Email: info@urukproperties.com

Office 1001, DAMAC Smart Heights
7 Al Nahar 2 St., - Barsha Heights - Dubai

URUK
PROPERTIES



UrukProperties

www.urukproperties.com