



EDEN HOUSE

THE CANAL

IMPECCABLY
CRAFTED HOMES



CONTENTS

1	Introduction	5
2	Architecture & Design	7
3	Location	9
4	Neighbourhood	11
5	Residences	14
6	Villas	27
7	Community	31
8	Amenities & Services	32
9	Contact	34

1

INTRODUCTION

A Contemporary Residential Collection
Located Alongside The Dubai Water Canal

Introduction
Architecture & Design
Location
Neighborhood
Residences
Villa
Community
Amenities & Services
Contact

A unique living experience created by blending the exceptional comfort, convenience, and sophistication of a top-tier hotel with a distinctly residential design concept. One where each detail has been carefully crafted to respond to the needs of its guests and allows you to feel truly at home.

“It’s always good to come back home; nothing is better than being welcomed back to Eden House.”

Executive
Administration & Office
Location
Neighborhood
History
Cost
Community
Accessibility
Contact

2

ARCHITECTURE & DESIGN Sophistication, Brought To Life Through Function And Form

Drawing inspiration from its surroundings and extending the brand's celebrated architectural language, Eden House - The Canal forms a contemporary, low-rise silhouette that blends seamlessly into the Water Canal, finding harmony with the land, sea, and sky.

Elegantly crafted interiors feature sophisticated and richly tactile materials, refined colour palettes that inspire each home with warmth and balance, and floor-to-ceiling windows positioned to maximise and frame stunning views of the Arabian Gulf.

Introduction
Architecture & Design
Location
Neighbourhood
Residences
Villa
Community
Amenities & Services
Contact



3

LOCATION

Elegant Waterfront Living. Just Moments Away
From The Vibrant Heart Of Dubai

Situated alongside the opening of the Dubai Water Canal in Jumeirah, this residential collection benefits from walkable streets and a sophisticated sense of calm for which the Jumeirah neighbourhood is coveted.

Just moments away from the coastline, residents can enjoy an oceanfront lifestyle while being close to celebrated cultural districts, Citywalk and Downtown Dubai, that host the city's most dynamic experiences.

“It’s like walking into a haven. It’s serene, bright and comforting. Little touches like the water feature and the greenery bring a sense of calm, and the privacy it offer provides real peace of mind.”

Executive
Architecture & Design
Landscape
Interior
Kitchen &
Bath
Construction
Project Management
Design

4

NEIGHBOURHOOD

Discreetly Positioned, Effortlessly Connected

Dubai Water Canal is a quiet, walkable oasis in a city full of ambition and opportunity.

Featuring a riverbank that is adorned with architectural excellence, gestures of landscaping that add green hues to rich spectrums of colour, and is in proximity to premium retail outlets and outstanding schools, the neighbourhood acts as a haven for those of refined taste.

“Everyone that lives here should feel like they are home. That’s the main thing, that we match the level of service and style that reflects exactly how they want to live.”

5

RESIDENCES

Rare And Refined Residences

Eden House The Canal is a low-rise six-story building with 88 meticulously crafted residences. From studio to four-bedroom suites to garden duplex units, and three stunning penthouses, each space is designed with the guests' experience in mind.

Selective in its choice of commissions, this development combines spacious interiors, premium material finishes, and refined colour palettes to create unique living spaces that find and nurture harmony.

Introduction
Architecture & Design
Location
Neighbourhood
Residences
Villa
Community
Amenities & Services
Contact

DESIGN

A Subtle And Sophisticated Residential Experience

Enjoy a new experience of modern living. Renowned architectural studio DLR Lab presents a unique design philosophy that seamlessly blends timeless sophistication with contemporary aesthetics. Their meticulous approach thoughtfully responds to the exacting criteria of today's discerning buyers.

These homes are masterpieces of scale and orientation. The focus is not simply "anticipating residents" every practical need but creating a profound connection with the surrounding environment. The very way and breathtaking views of Dubai's skyline that enhance every moment.











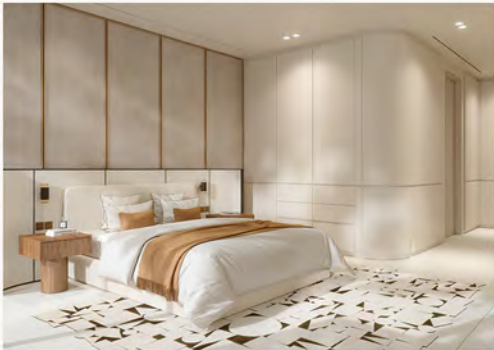


INTERIOR DESIGN
Details That Make A Difference

Every element, arrangement, and environment has been precisely considered and expertly curated to create living spaces that are both artistic masterpieces and functional sanctuaries.

Collaborating with the most skilled artisans and craftspeople in the region, interiors harmoniously blend lightly bronzed glasses, subtly textured stones, rich marbles, and brushed metals that ground and balance. The outcome is an extraordinary yet intimate collection of residences that evoke a sense of serenity, timelessness, and soft luminosity—homes that captivate and calm the senses.











“Our primary goal is to create value for the residents; that’s what gives us the edge. Our focus is on service and design, paying attention to every detail to meet the needs of the people who call Eden House home.”

6

VILLAS A Modern Celebration Of Function And Form

Carefully sequenced across three stories, Eden House - The Canal's seven villas provide unobstructed views of the canal, stand out amongst the city's stunning backdrop, and protect their residents' privacy so that each moment can be as intimate as it is memorable.

Limited in numbers, immaculately finished, three-bedroom homes provide a unique living experience supported by private pool terraces and gardens, dedicated service quarters, and parking.





Get In Touch

We'd love to hear from you. Contact us and let's discuss all your property needs.

Uruk Properties Head Office

Tel: +971 4 263 0808

Mob: +971 56 400 1413

Email: info@urukproperties.com

Office 7001, DAMAC Smart Heights
7 Al Nahla 2 St., Jumeirah Heights - Dubai

URUK



UrukProperties

www.urukproperties.com