



THE
SAPPHIRE

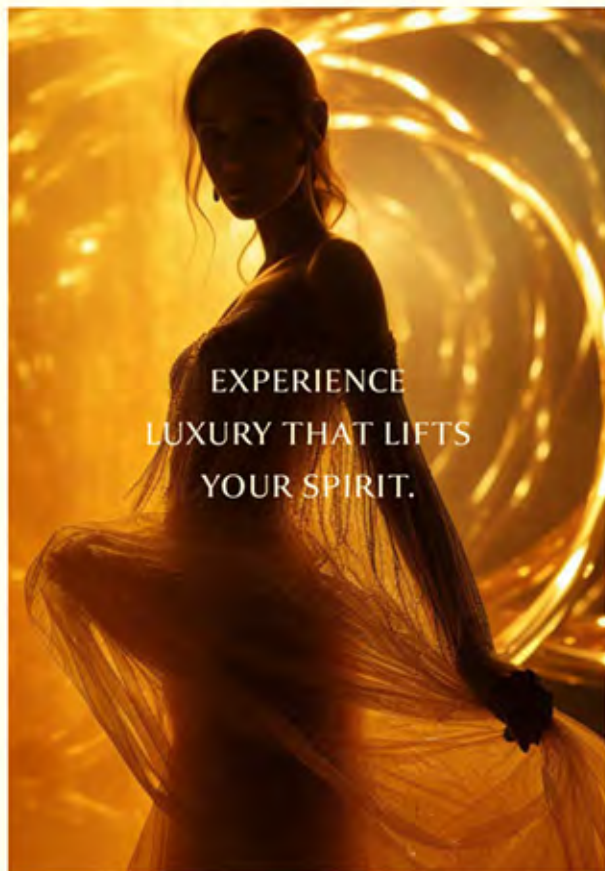
SHEIKH ZAYED ROAD

DAMAC



BASK IN A RADIANCE THAT
SHINES LIKE A BEACON
ABOVE THE CITY.





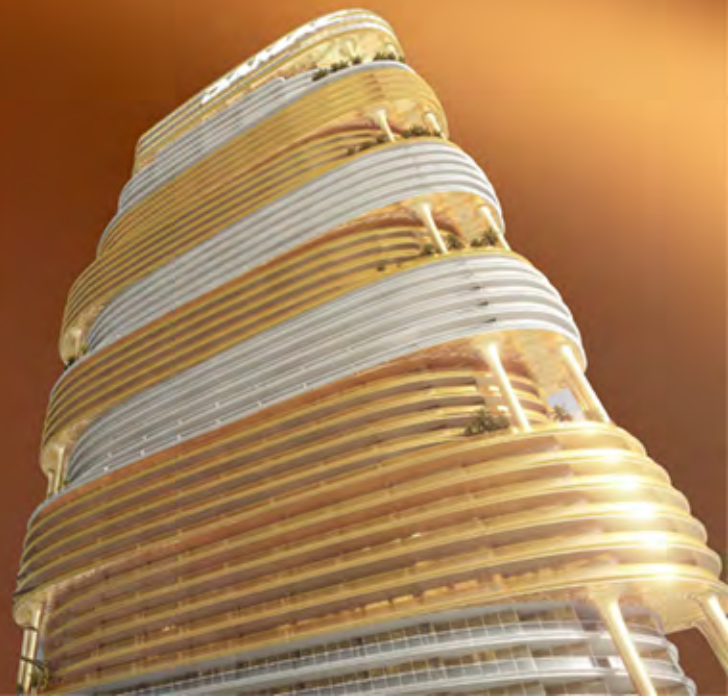
EXPERIENCE
LUXURY THAT LIFTS
YOUR SPIRIT.

PRESENTING



THE
SAPPHIRE

SHEIKH SAIFEDDIN ROAD





AT THE SAPPHIRE, SHEIKH ZAYED
ROAD, DE GRISOGONO BRINGS
TO LIFE A VISION OF OPULENT LIVING,
WITH EACH ELEMENT ECHOING
THE JEWELLER'S RENOWNED BLEND
OF BEAUTY AND PRECISION.

de GRISOGONO
GENÈVE



EMBRACE ELEVATED URBAN SERENITY

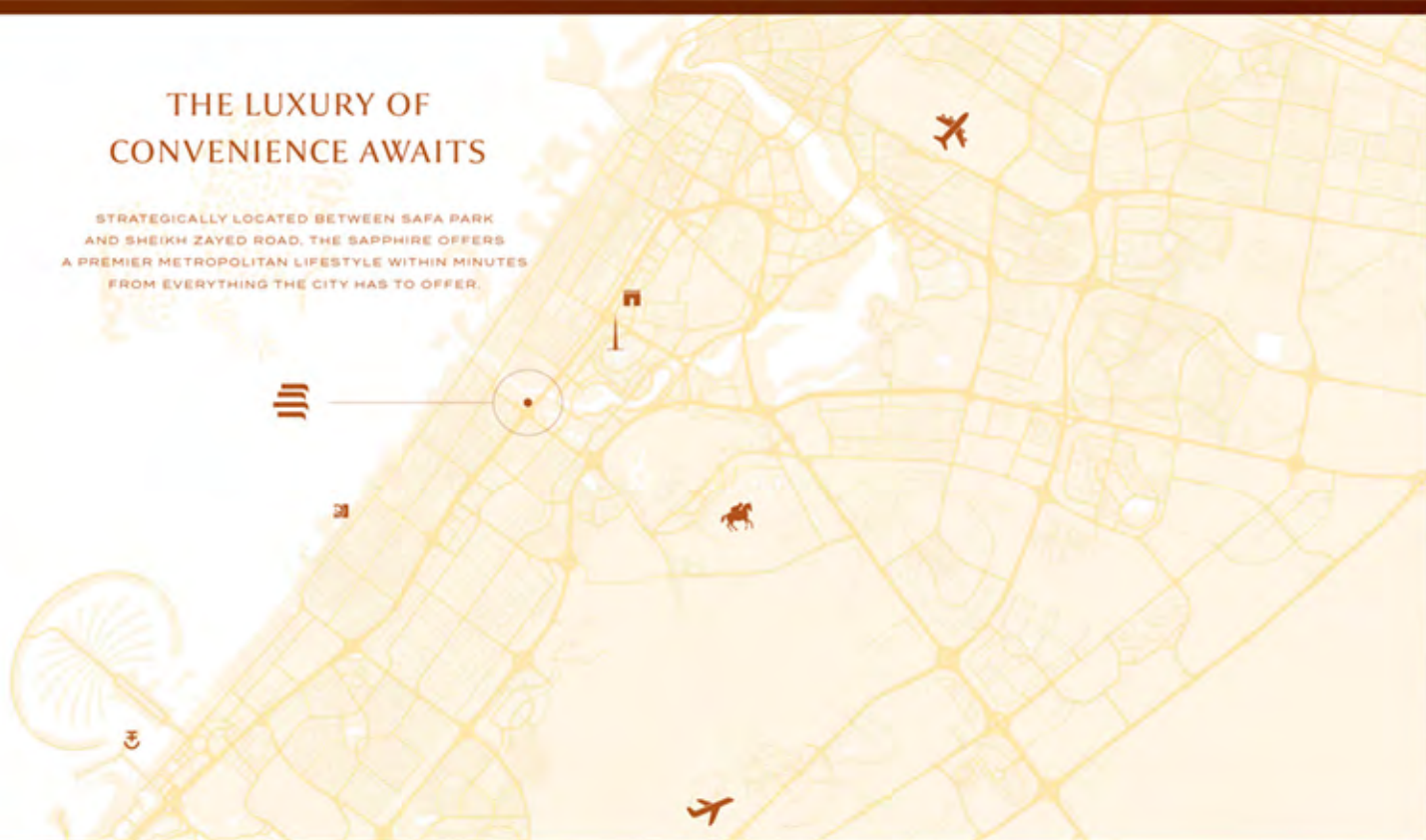


RISING AGAINST THE DUBAI SKYLINE,
THE SAPPHIRE, WITH ITS FLOWING LINES
AND SWEEPING CURVES, IS AN ARCHITECTURAL
MASTERPIECE THAT STANDS NOT ONLY AS
A RESIDENCE. BUT AS A LANDMARK OF LUXURY.



THE LUXURY OF CONVENIENCE AWAITS

STRATEGICALLY LOCATED BETWEEN SAFA PARK
AND SHEIKH ZAYED ROAD, THE SAPPHIRE OFFERS
A PREMIER METROPOLITAN LIFESTYLE WITHIN MINUTES
FROM EVERYTHING THE CITY HAS TO OFFER.



7 MINS

BURJ KHALIFA



9 MINS

DUBAI
INTERNATIONAL
FINANCIAL CENTRE



10 MINS

THE STABLES
DUBAI, MEYDAN



12 MINS

MGM RESORT
ISLAND



14 MINS

DUBAI
INTERNATIONAL
AIRPORT



14 MINS

DUBAI HARBOUR



16 MINS

PALM JUMEIRAH



35 MINS

JETEX VIP
TERMINAL



EXQUISITE VIEWS ARE
ON THE HORIZON

WAKE UP INSPIRED EVERY DAY TO BREATHTAKING
VIEWS OF DUBAI ICONS, SUCH AS SAFA PARK,
DUBAI CANAL, BURJ KHALIFA, AND BURJ AL ARAB,
RIGHT OUTSIDE YOUR WINDOW.







AT THE SAPPHIRE, A RADIANT CANOPY
WELCOMES YOU HOME, OFFERING A SPARKLING
PREVIEW OF THE LUXURY THAT AWAITS WITHIN.

THE SAPPHIRE





EXCEPTIONAL LIVING COMES TO LIGHT

ENTER THE LOBBY, WHERE A LUMINOUS RING
CROWNS THE SPACE, AND THE INTERPLAY
OF LIGHT AND SHADOWS ORCHESTRATES
A PLAYFUL DANCE, WITH A SUITE OF SUBTLE
TONES SETTING THE STAGE FOR
A LIFE THAT TRULY SHINES.







AN URBAN SANCTUARY
THAT IS YOURS.



WORK IN A SPACE THAT FLOURISHES

SET UP FOR THE DAY AT THE SAPPHIRE'S
SUNFLOWER GARDEN, A COWORKING SPACE
INSPIRING CREATIVITY AND INNOVATION,
WHERE BEAUTY AND PRODUCTIVITY
BLOOM SIDE BY SIDE.







REVEL IN THE SOUND OF HARMONY

IN THE CANARY GARDEN,
TIME IS NOT COUNTED,
BUT CHERISHED. FEEL IT
GENTLY UNFOLD TO THE MELODY
OF SONGBIRDS AS THEY OFFER
A SERENE RETREAT FROM
THE CITY'S PACE.



DIVE INTO AN OASIS OF INFINITE LUXURY

OVERLOOKING YET SHELTERED FROM
THE BUSTLING METROPOLIS BELOW,
THE INFINITY POOL CRAFTS
A SERENE RETREAT ABOVE THE
URBAN LANDSCAPE, WITH EACH
SWIM A SOJOURN INTO STILLNESS.





THEN, A SPLASH OF COLOUR UNDER THE NIGHT SKY...

AS THE SUN SETS, SEE THE POOL TRANSITION
INTO A MESMERISING LIGHT SPECTACLE,
TURNING EVENINGS INTO A UNIQUE BLEND
OF PLEASURE AND WONDER.











FEEL PROFOUND
BLISS AND
INNER PEACE

AT THE SPA, EACH TREATMENT IS
CRAFTED TO MEET YOUR INDIVIDUAL NEEDS.
HERE IS YOUR INVITATION TO ESCAPE,
RECONNECT WITH YOURSELF, AND EMBRACE
THE PAMPERING YOU DESERVE.

T H E S A P P H I R E











HERE, EVERY DETAIL
IS THE DEFINITION
OF LUXURY

FROM LUXURY APARTMENTS AND
TOWNHOUSES, TO ULTRA LUXURIOUS
PENTHOUSES, YOUR HOME AT THE SAPPHIRE
IS A FUSION OF CONTEMPORARY AESTHETICS
AND PRACTICAL SOPHISTICATION. WITH SLEEK,
CHIC, AND INDULGENT SPACES THAT REDEFINE
CITY LIVING. WELCOME TO A NEW DAWN
OF URBAN LUXURY.

T H E S A P P H I R E



















Get In Touch

We'd love to hear from you. Contact us and let's discuss all your property needs.

Uruk Properties Head Office

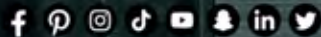
Tel: +971 4 263 0888

Mob: +971 56 400 1413

Email: info@urukproperties.com

Office 1001, DAMAC Smart Heights
7 Al Nahar 2 St., - Barsha Heights - Dubai

URUK
PROPERTIES



UrukProperties

www.urukproperties.com